

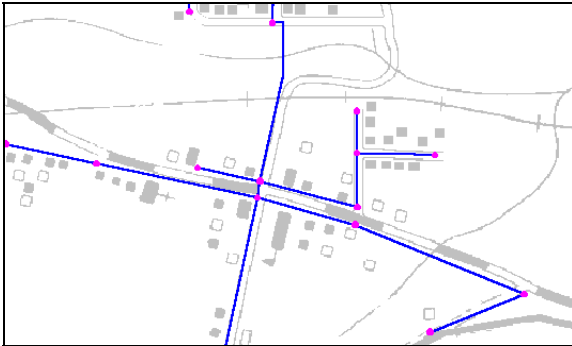
GASWorkS™

GDI Highlights



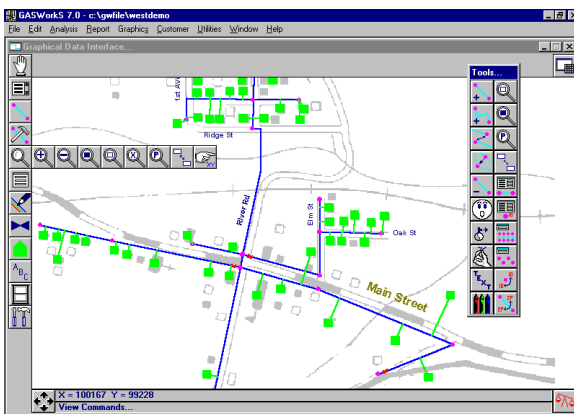
Although GASWorkS supports the creation and manipulation of text based models, graphical manipulation of the model data has proven to be far superior in efficiency and ease of use. This fact has driven the development and evolution of our sophisticated map style graphic interface, referred to as the GASWorkS Graphical Data Interface (GDI). The GDI provides a quick and efficient means of accessing, viewing, and manipulating the model data and results. The GDI has become the core of the GASWorkS data interface - a sampling of its many features are highlighted below...

Backgrounds Images...



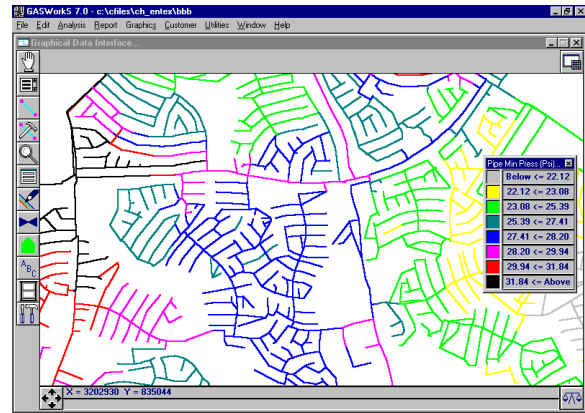
Support is provided to allow display of multiple bitmap (BMP) or Drawing Interchange File (DXF) images as a background to the model schematic. Layer, color, and line weight control is provided for DXF images. Background images can include scanned images, or images from mapping, CAD or GIS applications.

Tool Access...



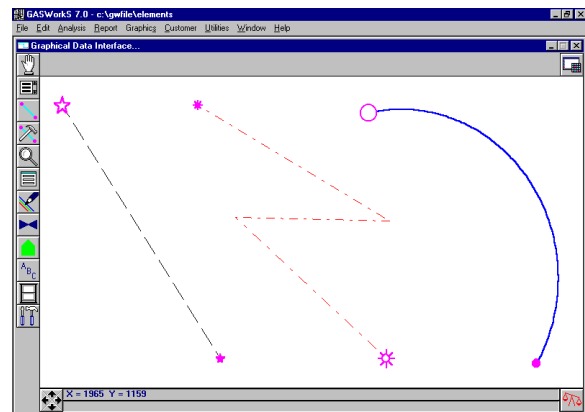
A wide variety of tools are provided for graphically creating, viewing, and editing the model data and results. The GDI commands can be accessed through the easy to use "fly-out" toolbars, the User customizable tool palette, or a scrolling command list.

Color Coding And Tracing...



A robust set of color coding and tracing features are provided to allow quick and easy visualization of the analysis results. The pipes and nodes can be color coded based on a wide variety of User selectable criteria. The flow stream can be traced up or downstream of a pipe, node, or customer.

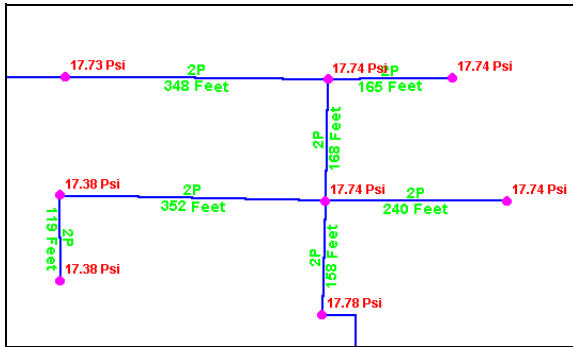
Graphic Elements...



The GDI image can include not only two-point lines, but also multiple vertex polylines, and arc segments. The color, symbol size or line weight, and symbol or line style can be individually set for each data feature.

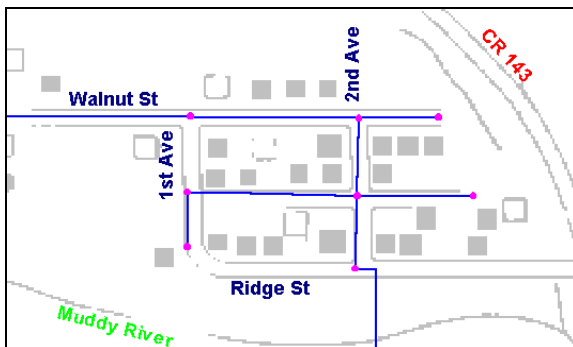


Display of Data Values...



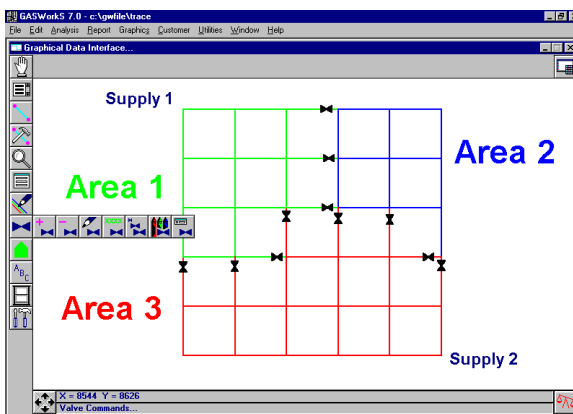
Data values such as pipe size, length, and node pressure can be displayed as text in the GDI. The text placement and display mode can be individually set for each feature.

User Text...



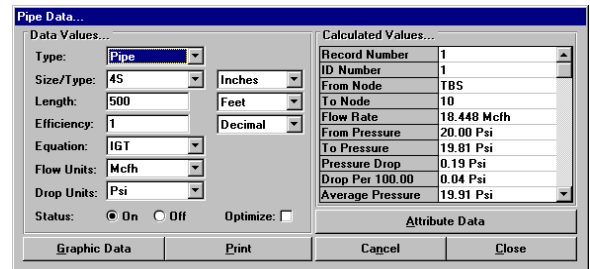
User defined text can be included to provide notes and references for the model. The placement, size, rotation, and color of User text items may be individually set.

Emergency Isolation Valves...



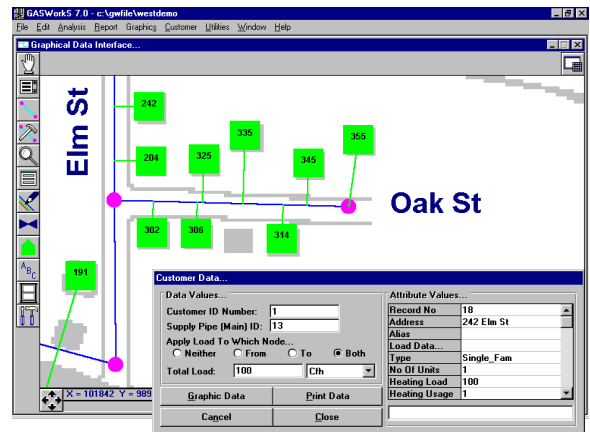
A special data item referred to as an "attribute" valve is provided to support the layout of emergency isolation areas. The attribute valves are not included in the pressure and flow calculations, but are used by the trace routine to design, test, and identify the extent of the isolation areas.

Data Access...



Access to the pipe and node data is provided through pop-up data screens. Model data, graphic settings, and analysis results are all accessed through a single comprehensive screen.

Customer Data Features...



Customers can be included as a model data feature. Routines are provided to automatically update the model loads when the customer loads or locations are changed. An external database can be attached to associate non-model data with the GASWorkS customer features, or the GASBase supplement to GASWorkS can be used as a "pre-built" database of various customer attribute items.

Ask Us...

If you have questions about the features found in GASWorkS, or would like to receive a free demonstration copy of the software, please send us a fax or e-mail, or give us a call...

